




For Earth, For Life
Kubota

M

KUBOTA
M7001 SERIES

7131-7151-7171





**Fresh
thinking is
the answer
to today's
challenges.**

The challenges facing the agricultural sector are becoming increasingly bigger. And when times are tough, only one thing helps: a new way of thinking. Envisaging alternative options and making smart decisions. For your next tractor purchase, this means opting for efficiency instead of image. For a tractor that can do tough work with top performance whilst under constant strain. And all that at a reasonable price. A Kubota tractor is exactly the right alternative at times like these.





Tough times need unexpected tough performance.

When it becomes increasingly more difficult to be successful, the time has come to take an uncompromising approach. And this means demanding unquestionable quality and reliability. Kubota meets these requirements with engines, which meet expectations when things get tough. You will be surprised by their performance, power, and fuel efficiency.





A new understanding of farming enabled by a global player.

2012

Kubota acquires the Kverneland Group

2014

Market launch of the M7001 series and the Kubota implements programme.

2015

Opening of the new M7001 production plant in France

To be a partner who can facilitate new ways of thinking requires a certain degree of power and seriousness. Did you know that Kubota is a global, rapidly growing company for the professional agricultural sector? Just take a look at the decisions and steps we have taken in the last 4 years. Surprised?



2016

Kubota expands its implements division with the acquisition of Great Plains

A future-oriented portfolio doesn't end with tractors.



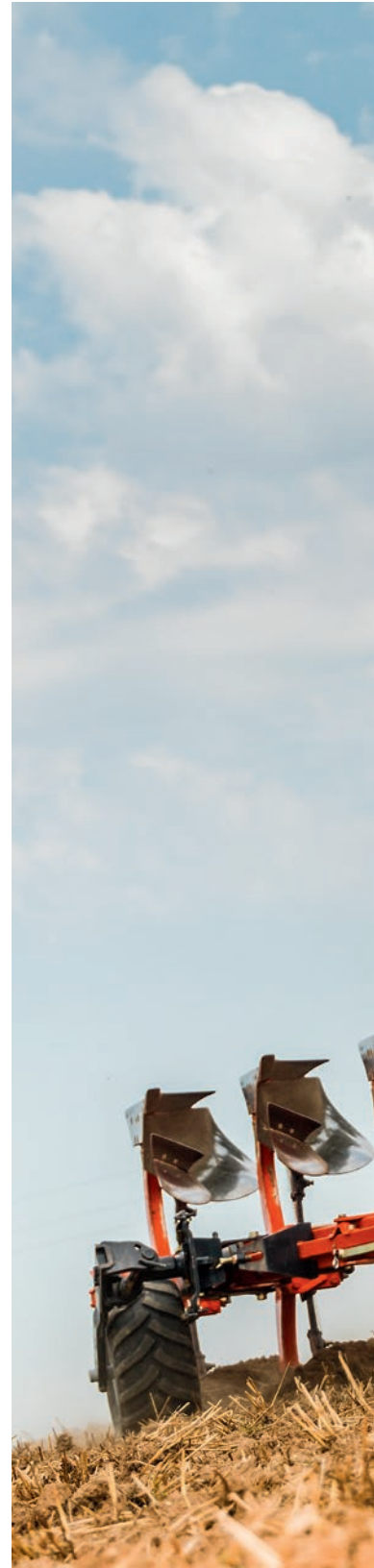
The requirements in agriculture are not only high, but also comprehensive and diverse. Fortunately, Kubota has exactly the right solution for every task—and from a single source. With a huge implements programme on the market and the Kubota ISOBUS production, we are your partner who thinks ahead and makes things possible. All machines and processes are perfectly compatible with each other and guarantee the highest level of quality and efficiency, not to mention future viability.



#Highlights

M7001: The powerful high performer

The Kubota M7001 is the high performer in the professional tractor market. With its extraordinarily powerful lift capacity and extensive potential for precision farming, the top model sets a whole new benchmark. Add to this first-class comfort and surprising operator convenience, efficient farming has never been this easy. Put its talents to use and reach top performance with ease.



Surprisingly powerful

All model variants with 130/150/170 hp, and 20/20/5 hp Power Boost option, demonstrate extraordinary dynamics and power.

Impressively environmentally friendly

The 6.1 L diesel engine with innovative SCR technology reduces emissions to a minimum and exceeds the current Stage IV Final emission standard.

Superbly versatile

The proven powershift transmission scores with its tremendous efficiency, and the continuously variable KVT transmission offers almost endless potential with maximum shifting comfort.



Exceptionally well arranged

The spacious cab provides boundless panoramic views with no blind spots, while the ergonomic seats and low cab noise ensure optimal comfort.

Astonishingly comfortable

The all-in-one terminal and multi-function lever are positioned optimally for ergonomics allowing intuitive control and easy monitoring of all machinery.

Impressively precise

100% ISOBUS-compatible, the M7001 supports the efficient use of operating equipment. The potential of its automatic steering system makes it a precision solution for effective agriculture.

#Engine

Strong performance: the biggest engine in its class

It's all about getting more out of the new 6.1-litre V6108 engine from Kubota. The four-cylinder engine delivers as much power as many six-cylinder engines in its performance class—perfect for tough field jobs. At the same time, its innovative SCR technology reduces harmful emissions. In other words, you are not the only beneficiary of this powerful, clean engine. The environment is too.



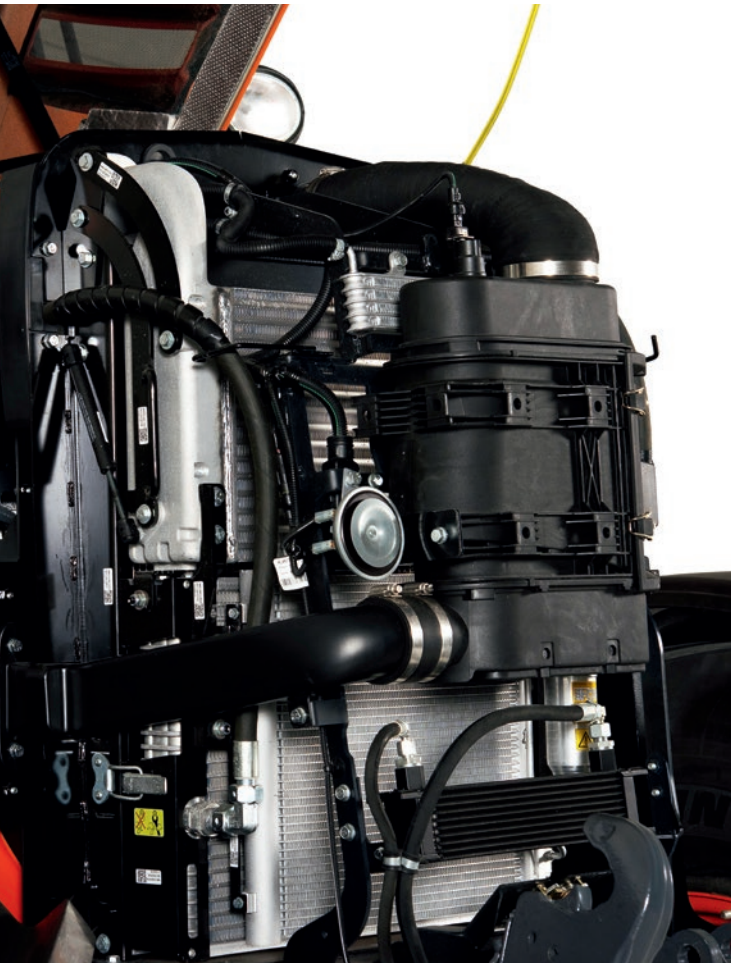
Did you know?

Did you know that Kubota produces its own engines and that Kubota is the global market leader for industrial diesel engines under 100 hp? You might be surprised to learn under which bonnets Kubota engines are at work. Top quality and efficiency are the main ingredients of this success.



38 L
Urea tank

330 L
Fuel tank



The bonnet of the M7001 conceals the latest high-efficiency engine technology of the Kubota Group, one of the leading global manufacturers of industrial diesel engines. The three models produce a maximum of 130, 150, and 170 hp (plus another 20/20/5 hp with Power Boost system) and are equipped with a highly efficient air filter system.

Engines with added value

The modern 6.1-litre diesel engines from Kubota with four valves per cylinder, a long piston stroke and proven Kubota E-CDIS (Central Direct Injection System) produce smooth power with more efficient fuel consumption and less noise and vibration.

The common rail system (CRS) electronically controls the injection timing and the amount of fuel injected in stages under high pressure for optimal combustion. This improves efficiency, lowers fuel consumption, and reduces engine noise. The high-performance turbocharger with waste gate system provides high torque and enormous tractive power.

Extra-large tanks for fuel and AdBlue®

The Kubota M7001 series is equipped with extra large tanks for long working days.

#Engine

Dynamic and powerful: benefit from the best of both worlds

The results are evident: the cutting-edge V6108 engine in the M7001 gives you the advantages of four- and six-cylinder engines—without their drawbacks. With its engine characteristics and features as well as its extraordinary dynamics and power, it meets all the requirements you might have for an engine. It sets a whole new benchmark in this performance segment.

Advantageous torque

The Kubota engine has an excellent maximum low-end torque at 1,400 rpm. Its performance curve is best in class and provides advantages for all power take-off (PTO) implements.

Clean engine technology

The robust V6108 engine is equipped with an SCR exhaust after-treatment system (AdBlue®). The combination of this technology with a diesel particulate filter (DPF) muffler and an exhaust gas recirculation (EGR) system ensures that the M7001 clearly exceeds the requirements of the latest Stage IV Final emission standards.

Lower fuel consumption

The four-cylinder engine in the M7001 has a very efficient fuel consumption for its power. Lower fuel demand, together with reduced AdBlue® consumption, results in long operating times.

More power with Power Boost

The M7001 offers additional power to maintain maximum working performance. If a short-term performance increase is needed for exceptionally heavy work during





PTO or transport applications, the M7001's Power Boost will immediately deliver more power to the tractor.

Efficient maintenance

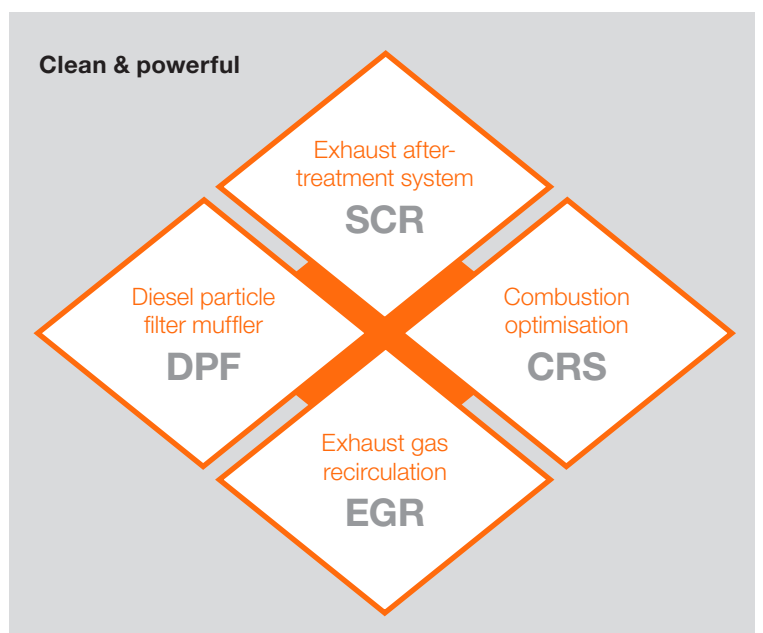
The large displacement and thus greater quantity of lubrication oil provides longer operation intervals between maintenance checks.

Stable crankcase

The stable crankcase helps to minimize engine vibration and therefore reduces the impact on auxiliary systems. Greater stability and durability are the result, along with increased torsional rigidity of the engine block. This is especially beneficial when working with the front loader or front linkage.

Proven reliability

Kubota is known for its reliable and long-life engines. You will find the same experience in this engine and benefit from it even after long-time usage.



#Transmission



A clear advantage: shift to efficiency with the M7001

With the versatile powershift transmission of the M7001, you're always where you need to be to benefit from increased efficiency: at faster speeds or in a working gear that suits your application. If you want stepless transmission, the continuously variable KVT transmission of the Premium KVT M7001 model pays off on every trip.

The M7001 has a reliable powershift transmission, with 24 forward and 24 reverse gears. It has four powershift speeds and six synchronised ranges, with auto-shifting mode. Optional creeper speeds are available (+ 16 forward and 16 reverse gears). That makes a total of 40 possible forward and reverse speeds. The powershift transmission can be shifted both manually and automatically according to the field or transport tasks of the M7001.

Steering is still your job

The auto-mode selects automatically the optimal gear for the desired travel speed. You only need to set the required speed range of the transmission in your dashboard or inside your K-terminal. Instead of having to concentrate on shifting, you can fully focus on the actual task at hand. The gains in productivity and comfort are significant.

Save fuel in overdrive mode

To save fuel on transport trips, for example, all transmissions are developed with overdrive technology (ECO mode). The engine speed is automatically reduced during driving, while maintaining a speed of 40 or 50 km/h. Another positive side effect: you can work in a quieter cab because of the reduced engine speed at 1,600 rpm in ECO mode.

Endless possibilities: this transmission gets you to your des- tination comfortably

If you're looking for optimum tractor performance wherever you go, the KVT (Kubota Variable Transmission) is the perfect choice for you. This is because the continuously variable transmission of the M7001 Premium KVT model provides infinite forward and reverse speeds. Another benefit: its dynamic, fast-response brake system gives you full control and constant speeds—even downhill.

Did you know?

Did you know that Kubota has held a leading position in the fields of construction machinery and compact tractors for many years in Europe? You will find the same experience and keys to success applied to the professional agricultural market.

The M7001 Premium KVT model is equipped with an advanced high-quality KVT transmission. Your tractor always runs at the right speed with the KVT, depending upon the implements and operating conditions, to provide first-class results. Since the tractor always runs at the optimal engine speed, work performance is optimised and fuel consumption is minimised.

Various modes and options

For road travel, you can operate the KVT with the multi-function lever or the accelerator pedal. Its sensitivity of acceleration and engine characteristic can be set via the K-Monitor.

Automatic mode is used mainly for road travel and field work. The tractor adapts to the load conditions at lower engine speeds, which results in reduced fuel consumption and noise levels.

Cruise control keeps the tractor at a constant speed. It can be preset for two forward and two reverse speeds.



Always under control

When driving on steep hills, the dynamic brake is used with heavy towed implements such as large baling presses, slurry tankers, fertiliser spreaders, and loaded trailers. It ensures that the trailer does not push the tractor along if you suddenly let up on the accelerator pedal in order to slow the machine.

Simple and intuitive

Kubota has also developed special control software for intelligent drive management that increases productivity and fuel efficiency. Whether hauling light or heavy loads, or during PTO work: the DROOP setting mode ensures that the KVT reacts the way it should. The driver can then focus on what counts most—high-quality work.





A real performer: feel free to challenge the M7001

Whether large implements or demanding front loader work—the M7001 has the hydraulics you can rely on. You can choose between two variants of specifications. Regardless of the model you pick, the efficiency and power will fascinate you.



The Premium models of the M7001 series offer a closed load-sensing hydraulic system with variable flow rates that can perform multiple functions at the same time, and an independent 110-litre pump with four electronically actuated hydraulic valves. Up to two additional valves are optionally available. Power-Beyond technology is available for customers who require a high-flow control on their implements.

The standard model of the Kubota tractor is equipped with an open hydraulic system, an 80-litre gear pump with three mechanically actuated hydraulic valves, and the option of a fourth valve.

Regardless of which model you select, both hydraulic options guarantee great versatility.

Easy to operate

The rear electronic linkage control is ergonomically integrated into the multifunction lever. The hydraulic controls are therefore easy to reach and operate. The external remote controls on the external fender facilitates the coupling and uncoupling of implements.

#Hydraulics

Tuned for strength: master any task with this rear linkage

The lift capacity of the M7001 will impress you: the tractor handles even very heavy implements with ease. Regardless of whether they are mounted on the front or the rear, the hydraulic linkage is optimally tuned to the unique capabilities of this high-performance tractor.



The M7001's tremendous lift capacity of 9,400 kg lets you work quickly with drill combinations and other heavy implements such as ploughs, cultivators, and the like. The front linkage with a capacity of 3,500 kg provides

additional lift capacity so you can easily tackle jobs that require heavy implements. This optional front linkage makes the already impressive M7001 even more capable.



At the right speed

You can select between four speeds (540/540E/1000/1000E) for the PTO speed, allowing you to save fuel while running a variety of implements. The large selection of PTO speeds makes the M7001 very flexible and you can also engage or disengage it from the external fender.

Automatic PTO engagement

You will appreciate the ease and precision of the automatic PTO engagement (on Premium models) when it's time to turn around at the end of the field. Auto PTO disengages the PTO shaft automatically for headland turns, when the three-point hydraulics system is lifted, and engages it again automatically when lowered.



PTO shaft and front linkage on request

The M7001 can be optionally equipped with a front PTO shaft with 1,000 rpm PTO speed. This allows the flexible use of front implements, such as a front mower or metering tank for fertiliser or seeder.

Tremendous lift capacity

The M7001 can lift 9,400 kg at the rear. Even with machinery attached, accessibility is ensured. This feature puts the Kubota M7001 at the top of its class.

#Cab

The perfect command centre: where you set the course

Anyone steering an M7001 enjoys an extremely comfortable workspace. The spacious cab of the M7001 is optimised to the needs of the driver. With its extremely comfortable, operator-friendly, and ergonomic design, you can fully concentrate and be relaxed at the same time. It's a decisive factor in helping you to fully tap into the enormous potential of the tractor.

The M7001 guarantees a pleasant working environment even when you need to spend extra-long days working with the tractor in the field. The spacious cab, among the largest in its class, is ergonomically designed to the driver's requirements. Besides its outstanding spaciousness, it features great comfort, an impressive operating concept, and exceptional panoramic visibility. The result is a pleasant working environment that makes it easy to concentrate on the work at hand without experiencing fatigue, even when it is already dark outside.



Did you know?

Did you know that Kubota manufactures products in seven European countries? This proximity to the market is central to the company's philosophy. Each factory adheres to the same high Japanese quality standards, whether it is located in Germany, France, or Japan.



Easy access

The cab of the M7001 can be accessed quickly and easily through the large ladder and wide door.



Endless storage space

The cab also offers plenty of storage space for food and drink, for example.

#Cab

The cab of the M7001: optimal comfort on long work days

A high level of driver comfort is essential, particularly on long, strenuous work days. One of the main objectives in the development of the M7001 cab was therefore to make you as relaxed as possible while working. Comfortable driver and instructor seats, several suspension options, and low interior cab noise contribute to high performance throughout the day.

Front axle and cab suspension serve to treat both driver and machine with care, resulting in high productivity. The M7001 is available without cab suspension, or can be supplied with two different suspension options: a mechanical suspension system or a pneumatic suspension system.

The cab suspension has ± 45 mm of spring travel and reliably softens even hard impacts while underway—either on the road or in the field. This protects the driver's health and increases comfort at the same time. The cab suspension thus ensures a pleasant driving experience and stress-free work over many hours.

Infinitely adjustable front axle suspension

The front axle suspension eases the grind of a long work day, even in a literal sense. The suspension features automatic field settings, which activate the suspension automatically when ploughing, such as during headland turns. This allows you to concentrate completely on making the turn. Depending upon your preference, the axle suspension can also be deactivated manually.





Choice of cab suspension

The cab of the M7001 offers a mechanical suspension system as an option. Furthermore, a pneumatic suspension system is also optionally available.

Pleasant driving experience

The extremely comfortable driver's seat of the M7001 guarantees a relaxed ride.

Very comfortable for instructors

The large cushioned instructor seat delivers comfort and space and does not disturb the operator's visibility.

Peace and quiet

The well-insulated cab (72 dB(A)) lets in very little noise from outside. This allows you to focus and work in peace all day long.



New perspectives: you will enjoy it

The four-pillar cab of the M7001 is designed for you to be in control at all times. Thanks to its extensive panoramic windows, you enjoy a clear view of the front implement or front loader areas of the tractor. The excellent overview is enhanced by exceptional operator convenience. All of the instruments are arranged so that you can reach them easily, with optimal access. In short: you set the course.

With only four pillars, rounded rear fender, and a forward-sloped bonnet, the view from the M7001 towards the front, rear, and both sides is excellent. Without any blind spots, the M7001 can be safely maneuvered and you can concentrate fully on the job.

The ergonomic design of the control elements helps to focus on the work at hand. All control levers, switches, and buttons in the cab are arranged logically, are easily recognisable, and within comfortable reach. The large LCD display on the dashboard provides a clear and precise overview of all the information required for operating the tractor. Even a first-time driver will appreciate the easiness.

Information on demand

The LCD display can be set up so that all required information is shown and arranged for intuitive use. This makes it simple to operate, and provides great flexibility and productivity when used by different drivers.

Perfect even for overhead work

No fan controls or vents are installed in the cab ceiling, where they could block the view upwards. The pop-up skylight made of glass offers a clear view of the raised front loader and lets in fresh air as needed.







Control at the press of a button: everything at hand

Easy operation instead of cumbersome handling: the tractor's multi-function lever puts the most important operations in one central place. It is ergonomically positioned within easy reach on the right-hand console. The control of tractor functions doesn't get any easier or more ergonomic.



Comfort on long work days

Fewer arm motions lead to easier operation and less fatigue. In other words: you can do more work in less time, with less effort on your part. A tractor can hardly be any easier or more comfortable to use.

Critical functions can be performed without changing your grip. All control elements are easy to reach and can be operated with your finger and thumb. Want to increase or decrease the speed of the tractor? A single motion and it's done—while your elbow remains on the armrest.



Did you know?

Gonshiro Kubota founded the company because he could no longer stand to see people dying from contaminated drinking water. He began by manufacturing products for clean water supply. Since then, we have been offering various products that help to improve the living conditions of people and society. That's what "For Earth, For Life" stands for.

For the advanced model of the M7001 series, Kubota has integrated all control elements in this modern armrest. All of the regularly needed control elements are easy to reach without having to raise your arm. This results in even greater comfort and improved productivity—including intuitive operation.



Some additional controls are centred on the right hand side in all models of the M7001. The Standard model has a rigid armrest with the multi-function lever, while the advanced models are equipped with a modern armrest that includes the multi-function lever.

#Traction

Consistently on track for success: reach your goals with ease in the M7001

Hard ploughing work, quick transport trips, or frequent front loader work in tight farmyards—with its excellent traction, extremely high driving stability, and excellent maneuverability, the M7001 comes through even on tough assignments. With the Kubota M7001, you're sure to meet your objectives, no matter how daunting the task.

The front axle and cab suspension of the M7001 improve productivity with increased traction and driving comfort. The optional front axle suspension of the tractor helps to apply greater force to the ground. The tractive power is optimally transferred—an advantage when ploughing heavy soils, among other things.

The front axle suspension not only results in better traction and more driving comfort, but also ensures safe driving behavior. This provides additional safety for faster road travel. When ON/OFF in automatic mode, the suspension system automatically adapts to the current load.

Excellent maneuverability

Despite its considerable wheelbase of 2.72 m, the M7001 has a steering angle of 55 degrees, making it extremely agile. As a result, the tractor can be manoeuvred even in tight farmyards and headlands.

Auto-differential locks engage electro-hydraulically

The auto-differential locks on the front and rear axles of the M7001 are engaged electro-hydraulically and ensure the best possible traction, even under poor soil conditions.





The all-in-one terminal: operation has never been easier

Kubota has done everything to further optimise your workspace according to your needs. All of the information is found at one central point, the K-Monitor, so that you can operate the tractor and machinery as easily as possible. The 7-inch and Pro 12-inch K-Monitors combine a variety of functions with intuitive operation.

The advanced M7001 is 100% ISOBUS-compatible, which means that you can use any ISOBUS device or machine on the market without limitations. This saves time and money, allowing you to do your work stress-free.

ISOBUS on board

Advanced M7001 tractors are ISOBUS-certified. A connector at the rear of the tractor makes it possible to display the ISOBUS devices in the cab on the Pro 12-inch or 7-inch K-Monitor. All device settings can be accessed from the touchscreen display by your seat. You can adjust the K-Monitors to your liking.

Two certified ISOBUS operating terminals are available for the M7001: the Pro 12-inch and 7-inch K-Monitors. These user-friendly touchscreen terminals can be used to set up and control ISOBUS devices and manage all tractor information and settings.

The Pro 12-inch and 7-inch K-Monitors display all tractor functions (transmission, hydraulics, headland management, etc.) and ISOBUS devices. The two operating terminals are certified according to ISO 11783.

On the K-Monitor Pro 12-inch there is one main working screen and three others to display all functions that you want. This can allow the operator to switch from one function to the other. On the K-Monitor 7-inch there are some shortcut switches to allow fast and easy switching between all the functions.

Did you know?

Did you know that Kubota is an ISOBUS pioneer? The Kubota company Kverneland Group invented the ISOBUS technology. And incidentally: Kubota is also leading the industry in AEF certified ISOBUS compatibilities.





K-Monitor Pro 12-inch



K-Monitor 7-inch



Wide-ranging assistance

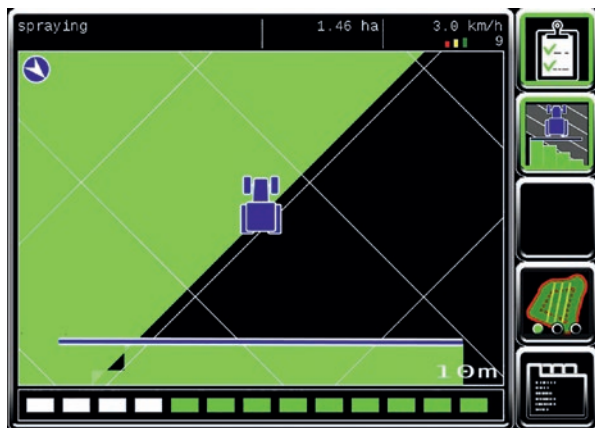
Headland management automates the raising and lowering of attachments in headland turns. This saves time and allows you to concentrate fully on turning without worrying about the implement.

In addition, the ISOBUS technology is of great assistance in many other tasks, such as the manual steering aid displayed via a LED-light bar. An automatic steering system is available as an option for the Pro 12-inch K-Monitor. The steering aids contribute to minimal overlaps and missed areas, time savings, lower costs for resources, and productive work at night.

Efficient use of resources

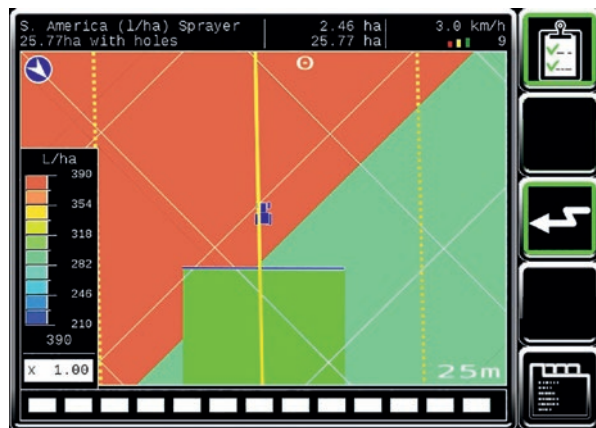
In combination with a GNSS receiver, the GEOcontrol function included in the Kubota terminals enables the use of the section control application and/or the variable rate function. These functions can be used with ISOBUS implements like seeders, precision seeders, spreaders or sprayers. These functions allow cost savings, by saving time, overlap, fertilizer, seed.

All the different tasks done with the terminals can be exported to offer perfect traceability.



Section control:

With the automatic section control license, the implement is able to manage the opening and closing of the sections by itself. This saves costs and increases driver comfort.



Variable rate:

With the automatic variable rate license, the implement is able to independently manage the rate in combination with prescription maps. This increase the yield per hectare, saves costs and increases driver comfort.

Just let the tractor drive itself

Precision farming is characterised by the very precise application of seeds, fertilisers, and pesticides. For even greater focus during application, you can request an automatic steering system for the M7001. It is also very practical for field work, keeping you safely on track.

Thanks to the optional automatic steering system, you can concentrate fully on the optimal use of your implements. Because, your tractor will do the steering for you! In combination with the GPS system, the automatic steering controls the direction and movement of the M7001 reliably and precisely—when driving straight ahead as well as turning corners.

Work with less stress and save money

The automatic steering provides not only high efficiency and accuracy for your work, but is also a great relief and effectively reduces stress. This technology is of particular use when working at night.

In the end, the automatic steering even helps you save money. Overlaps and missing areas are avoided, as you can apply fertilisers, seeds, and pesticides more precisely and as unnecessary driving is avoided, you will also require less fuel.

Two is better than one

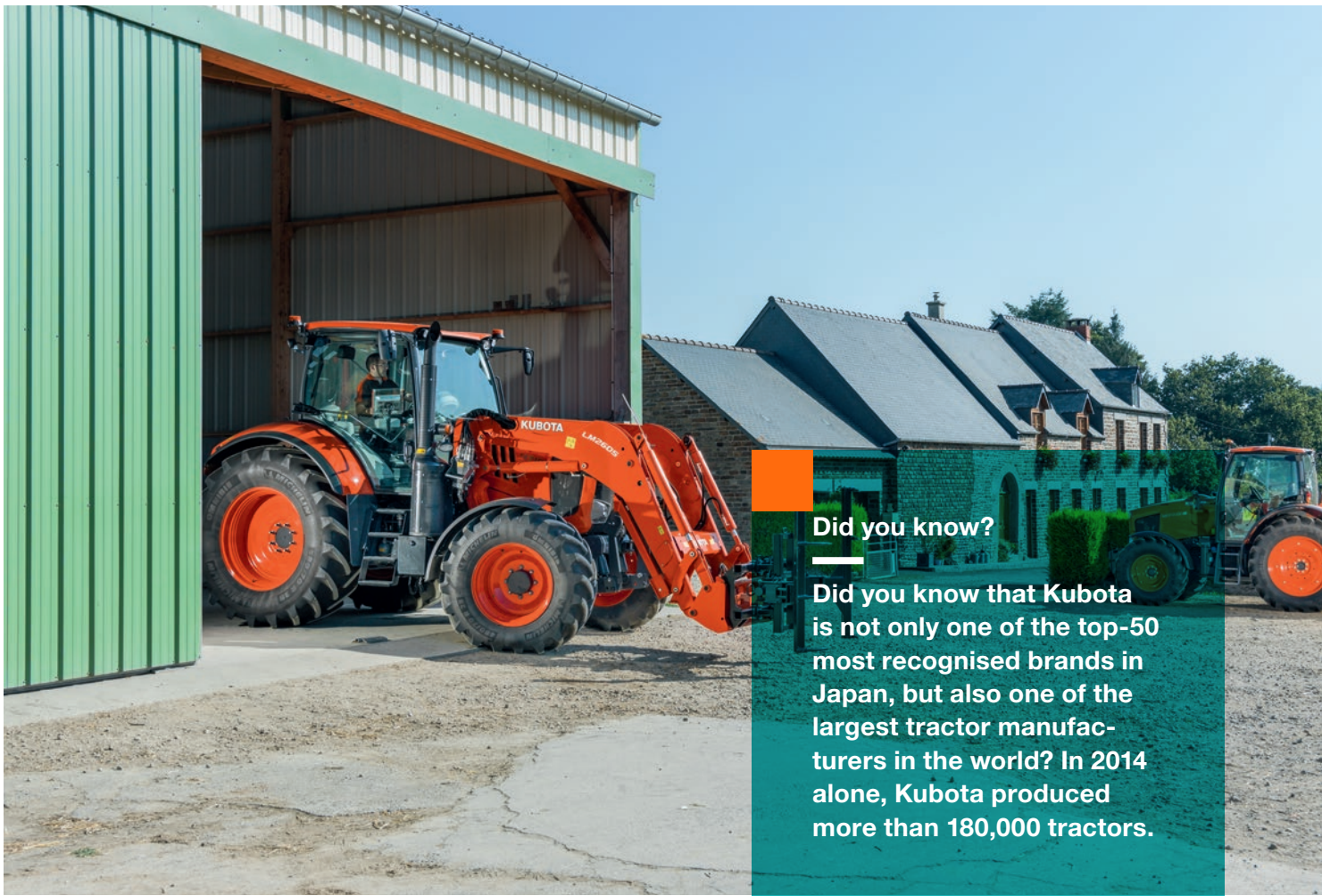
The integrated GPS allows the M7001 to record its own movements, to display GPS maps on the K-Monitor, and to perform various automatic GPS-controlled functions. To ensure maximum accuracy, Kubota relies on two correction signals, namely EGNOS (European Geostationary Navigation Overlay Service) and RTK (Real Time Kinematics.) The combination of these two technically refined solutions keeps you on track with extreme precision.

Thanks to the optional automatic steering system, the M7001 knows where you are and in what direction you are moving. If you leave the driving to the tractor, you can use the additional freedom to perform a number of control functions that allow even greater efficiency and precision in your work.





#Front loader



Did you know?

Did you know that Kubota is not only one of the top-50 most recognised brands in Japan, but also one of the largest tractor manufacturers in the world? In 2014 alone, Kubota produced more than 180,000 tractors.

An innovative concept: the perfect combination of tractor and front loader

Front loader work with the M7001 provides perfect compatibility. You benefit from the fact that the tractor and the original Kubota front loader are perfectly matched and optimally complement each other. This tailor-made combination provides several advantages at once: smooth operation, first-class controls, and maximum efficiency for front loader work.



Effortless operation

The front loader control is located on the M7001 Premium armrest for smooth and effortless operation. You can use several functions simultaneously thanks to the hydraulic technology. The tipper bucket control ensures rapid dumping.

Attach and detach in minutes

No need for long waiting times: the front loader can be attached or detached in minutes, without any tools.

Low-impact operation

The Kubota KSR (Kubota Shockless Ride) shock softening system helps to minimise vibrations.

Expanded hydraulic functions

Even with the basic equipment package, all M7001 front loaders have three functions as standard and a fourth function as an option for working with baling forks or other hydraulically activated front loader tools. The valve is activated by a conveniently located switch on the joystick.

- Electronic joystick in the armrest (Premium and Premium KVT models)
- Mechanical joystick (Standard model)

Time-saving multi-coupler

Just pull the lever on the multi-coupler to quickly connect all hoses and cables at once. A front loader could hardly be easier to attach or detach.

Optimal view towards the front

The Z-mechanical self levelling is a feature taken from Kubota wheel loaders and is likewise integrated in the Z-kinematics. This system is more robust and allows a clear view towards the front.



Kubota Farm Solutions: 360° performance for 100% success

We understand that you need more than a powerful tractor to succeed: namely, an integrated system of products and services to increase your competitiveness and preparation for the future. With Kubota Farm Solutions (KFS), we have brought together our solutions in a system—and targeted our proposition to you. From intelligent technology to individual services, the KFS advantages complement each other, forming a circle that ends where it begins: with our commitment to support you a little better every time, now and in the future.





Performance

You have a clear objective: to get your work done productively and successfully while being relaxed. Kubota offers you the equipment that can best support you in this endeavour. Whichever tractor or implements you decide on, you can always count on proven quality, excellent performance, and co-ordinated features. In short: intelligent and reliable technology that gets you a decisive step closer to your goal.



Control

You want full control over what you are doing. Kubota provides you with perfectly integrated systems to help you achieve that. From machine optimisation to implement monitoring, you can control the tractor and resources easily from a single terminal. This not only provides you with a better overview of all work processes, but also allows you to work without stress.



Optimisation

You know exactly how you want to get your work done: efficiently, precisely, and most comfortably. Kubota gives you everything you need to obtain optimal results while remaining at ease. With our ISOBUS technology, precision farming solutions, and automatic steering system, you can apply seeds, fertilisers, and pesticides with extreme precision. This lowers your costs and reduces your workload.



Value protection

You know what it takes to be commercially successful: top performance with every task and top conditions over many years. Once again, Kubota offers solutions that fulfil what they promise. Your Kubota tractor is already protected by 3 year manufacturer warranty right from the start. If you want, you can even extend your warranty to protect the value of your investment, avoid expensive downtimes, and remain profitable over the long term.



Finance management

You want to improve your productivity, but not at any cost. With Kubota Finance, you can make your planned investment with ease, convenience, and safety. Whether financing or leasing, you benefit from professional advice and attractive conditions. All you need in order to gain the advantages of a technology that drives your success forward. Whether you need machines or services, you have full control of the costs.

#Technical data

Model		M7131	M7151	M7171
Engine		V6108-CR-TIEF4		
Number of cylinders/valves/aspiration		4/4v/turbo charged and intercooler		
Engine power output (97/68/EC)	hp (kW)	130 (95)	150 (110)	170 (125)
Max. power incl. Powerboost	hp (kW)	150 (110)	170 (125)	175 (130)
Displacement	cm ³	6,124		
Nominal Power	rpm	2,200		
Max. torque	Nm	607	690	711
Max. rpm torque		1,400		
Alternator/battery	l	150 Amp/170 Ah (20HR)/1000CCA		
Fuel/Ad blue tank capacity		330/38		
Variants		Standard	Premium	Premium KVT
Transmission				
Number of speeds		24 forward, 24 reverse (including creeper option: 40 forward, 40 reverse)		KVT
Top speed	km/h	40/50		
Minimum speed at 2000 RPM	km/h	3.70 (creeper 0.45)		0.001
Main shift group		4 powershift speeds		KVT
Range Group		6-way synchronised		KVT
Shuttle shift		electro-hydraulic auto modulation		
Main clutch		hydraulic wet clutch		
Hydraulic system				
System		fixed-displacement pump	load-sensing with variable-displacement pump	
Pump capacity	l/min.	80	110	
Rear power lift		auto lower link CAT 3		
Control system		EHR/lower link sensor		
Category		III		
Rear linkage capacity	kg	9,400		
Front linkage capacity	kg	3,900		
Hydraulic valve type		mechanical	electro-hydraulic	
Number of control valves		3 (option 4)	4 (option 5)	
Rear PTO shaft speed	rear front	rpm	540/540E/1,000/1,000E 1,000	
Tyres size				
Front		540/65R28		
Rear		650/65R38		
Dimensions & weight				
Overall length	mm	4,770		
Overall height	mm	3,030		
Overall width	mm	2,500		
Wheelbase	mm	2,720		
Shipping weight	kg	6,300		

Model	M7131	M7151	M7171
Engine			
Memo A & B	●	●	●
Road power boost	●	●	●
PTO power boost	●	●	●
Auto RPM management with powertrain	●	●	●
Transmission			
Creeper	○	○	N/A
PTO 540/540E/1000/1000E	●	●	●
PTO automode	N/A	●	●
Front loader ready	○	○	○
Automode shifting management	●	●	N/A
Cruise speed	N/A	N/A	4
Hydraulic			
Open center 80L/min	●	N/A	N/A
Close center 110L/min	N/A	●	●
Hydraulic flow valve management	mechanical		electronic
Valve with flow control	2		all
Electrohydraulic joystick	N/A	○	○
Power beyond	○	●	●
Front outlet double effect	○	○	○
Front axle			
Front axle suspension	○	○	○
Auto 4WD	●	●	●
Auto diff. lock	●	●	●
Heavy duty vesion	●	●	●
Rear axle			
Max speed 40 km/h	●	●	●
Auto diff. lock	●	●	●
Sleepage radar sensor	N/A	○	○
Cab			
Cab suspension		-/mechanical/pneumatic	
Air conditioning	●	●	●
Sunroof open type	●	●	●
Radio	○	○	○
Pneumatic seat suspension	●	●	●
Instructor seat	○	○	○
Multifunction lever	●	●	●
Armrest with integrated multifunction lever	N/A	●	●
Rear defogger glass	○	○	○
Rear sunshield	○	○	○
Mirror defogger	○	○	○
LED Beacon	2	2	2
6 Working light	●	●	●
10 working light	○	○	○
Repeat light	○	○	○
Terminal			
Terminal	N/A	K-Monitor 7" or K-Monitor Pro 12"	
ISOBUS	opt	●	●
HMS	N/A	●	●
Autosteer ready	N/A	○	○
EGNOS correction for autosteer	N/A	●	●
RTK correction for autosteer	N/A	○	○

○ option ● standard

Kubota

Kubota (U.K.) Limited

Dormer Road Thame, Oxfordshire, OX9 3UN

Website: <http://www.kubota.co.uk>



Every effort has been made to ensure that the contents of this publication were accurate and up-to-date at the time of going to press. All rights reserved. No part of this publication may be reproduced in any form by any means, without prior permission of Kubota. Kubota reserve the right as a manufacturer to amend and update any specification or performance information without notice, if required.